

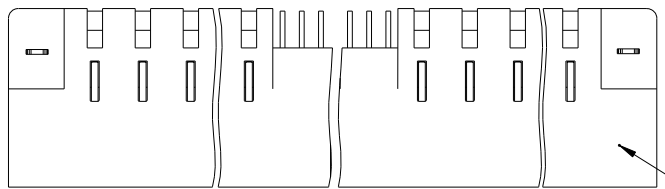
Tous droits strictement réservés. Reproduction ou communication a des tiers interdite sous quelque forme que ce soit sans autorisation écrite du propriétaire. Propriété de c FCI. Droits de reproduction FCI.



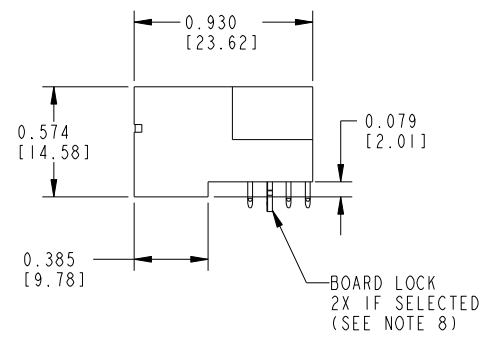
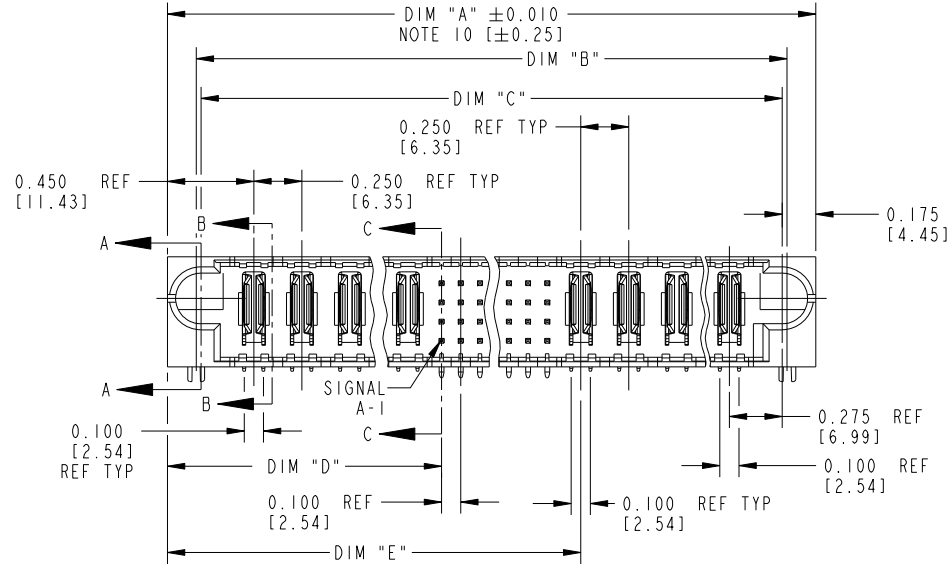
All rights strictly reserved. Reproduction or issue to third parties in any form whatever is not permitted without written authority from the proprietor. Property of FCI. Copyright FCI.

1 | 2 | 3 | 4

PRODUCT NUMBER
51720- ABBCCCDDEF...
NOTE ①



SEE NOTE 9



mat'l code SEE NOTE 2				tolerances unless otherwise specified		CUSTOMER COPY	www.fciconnect.com
ltr	ecn no.	dr	date	linear	.XX±.01/.X±.3		
J	DG05-0132	SJ	05/23/05		.XXX±.005/.XX±.13		RIGHT ANGLE HEADER w/GUIDE PIN POWER / SIGNAL / POWER
K	DG05-0485	GuoJM	11/21/05	angles	.XXX±.0020/.XXX±.051		
L	DG07-0498	JW	05/23/08		0°±2°	INCH / MM	product family
M	DG08-0272	WD	09/28/08	dr	C. BAROT 05-04-99	scale	PwrBlade
				enrg	RYAN YUAN 11/08/06	1:1	code
				chr	J. BROWN 05-04-99		213
				appd	J. BROWN 05-04-99		SHEET
sheet index	revision sheet	M 1	M 2	M 3			1 OF 3

form no. 7530-001-103

1 | 2

PDM: Rev:M

STATUS: Released

Printed: Oct 17, 2008

B | 1 | 2 | 3 | 4 | B

Tous droits strictement réservés. Reproduction ou communication a des tiers interdite sous quelque forme que ce soit sans autorisation écrite du propriétaire. Propriété de c FCI. Droits de reproduction FCI.



All rights strictly reserved. Reproduction or issue to third parties in any form whatever is not permitted without written authority from the proprietor. Property of FCI. Copyright FCI.

1 | 2 | | | | | | | | | | 3 | | | | | | | | | | 4

PRODUCT NUMBER	DIM	LENGTH FORMULAS (SEE NOTE 10)
51720-ABBCCDDEF-- NOTE ①	DIM "A"	.250 [6.35] x BB + .100 [2.54] x (CCC/4) + .250 [6.35] x DD + .650 [16.51](NOTE 10)
	DIM "B"	.250 [6.35] x BB + .100 [2.54] x (CCC/4) + .250 [6.35] x DD + .350 [8.89]
	DIM "C"	.250 [6.35] x BB + .100 [2.54] x (CCC/4) + .250 [6.35] x DD + .300 [7.62]
	DIM "D"	.250 [6.35] x BB + .375 [9.53]
	DIM "E"	.250 [6.35] x BB + .100 [2.54] x (CCC/4) + .450 [11.43]
	DIM "F"	.250 [6.35] x BB + .100 [2.54] x (CCC/4) + .250 [6.35] x DD + .680 [17.27]
	DIM "G"	.250 [6.35] x BB + .225 [5.72]
	DIM "H"	.250 [6.35] x BB + .100 [2.54] x (CCC/4) + .250 [6.35]

CONNECTOR NOTES

- ① PRODUCT NUMBER CODE:
51720 - A BB CCC DD E F LF
- NO THIS SUFFIX: 100u"/2.54um SnPb ON PCB INTERFACE
 - ADD THIS SUFFIX: 78u"/2.00um Sn OR 5u" Au ON PCB INTERFACE
 - RETENTION TO PCB (NOTE 8)
 - TAIL OPTIONS (NOTE 7)
 - NUMBER OF RIGHT END POWER CONTACTS (NOTE 6)
 - NUMBER OF SIGNAL CONTACTS (NOTE 5)
 - NUMBER OF LEFT END POWER CONTACTS (NOTE 4)
 - PLATING (NOTE 3)
 - BASE NUMBER
- ② HOUSING MATERIAL: GLASS FILLED V-O HIGH TEMP THERMO PLASTIC.
SIGNAL CONTACT MATERIAL: COPPER ALLOY
POWER CONTACT MATERIAL: COPPER ALLOY
- ③ PLATING OPTION:
1: SEE ITEM PRINT 10064183 FOR PLATING SPEC OF 51720-ABBCCDDEF; 51720-ABBCCDDEFLF
- ④ LEFT END POWER CONTACTS, 01 TO 20 AVAILABLE.
MAXIMUM OF 20 POWER CONTACTS PER CONNECTOR.
- ⑤ SIGNAL CONTACTS, 004 TO 148 AVAILABLE.
- ⑥ RIGHT END POWER CONTACTS, 01 TO 20 AVAILABLE.
MAXIMUM OF 20 POWER CONTACTS PER CONNECTOR.
- ⑦ TAIL OPTIONS:
A = .135 [3.43] SOLDER TO BOARD
8. RETENTION TO PCB OPTIONS:
A = BOARD LOCK (REQUIRES .098 + .002, -.001 [2.49 +0.05, -0.03] THRU HOLE IN PCB).
MOUNTING FOOT THICKNESS: .220 [5.59]
B = .150 [3.81] THRU HOLE (REQUIRES .158±.003 [4.01±08] THRU HOLE IN PCB).
MOUNTING FOOT THICKNESS: .160 [4.06]
9. MANUFACTURE'S NAME, P/N, AND DATE CODE TO APPEAR ON THIS SURFACE.
10. THE MAXIMUM OVERALL LENGTH (DIM A) OF A PART IS 8.00 [203.2]
11. PRODUCT SPECIFICATION GS-12-149
12. REFERENCE 51697 FOR SPECIALS WORKSHEET.
- PCB NOTES:
13. ALL DIMENSIONS ARE BASIC UNLESS OTHERWISE SPECIFIED.
14. ALL THROUGH HOLES ARE LOCATED WITH A TRUE POSITION OF .004 [0.10]
15. ALL HOLE DIAMETERS ARE FINISHED HOLE SIZE.
16. Ø0.0453 ±.001 [1.151 ±0.02] DRILLED HOLES PLATED WITH 0.0003 [0.007] MIN SnPb OVER 0.001 [1.03] TO .003 [0.08] PLATING TO ACHIEVE A .040±.003 [1.02±08] HOLE.
17. A SYMBOL WILL BE NEXT TO ANY DIMENSION, VIEW, OR NOTE WHICH HAS BEEN MODIFIED WITH THE CURRENT DRAWING REVISION.

mat'l code				tolerances unless otherwise specified		CUSTOMER COPY		www.fciconnect.com		
ltr	ecn no.	dr	date	linear	.XX±.01/.X±.3			title		
M					.XXX±.005/.XX±.13			RIGHT ANGLE HEADER w/GUIDE PIN		
					.XXX±.0020/.XXX±.051			POWER / SIGNAL / POWER		
				angles	0°±2°			product family		
				dr	C. BAROT 05-04-99			PwrBlade		code
				enrg	RYAN YUAN 11/08/06			size		213
				chr	J. BROWN 05-04-99			51720		SHEET
				appd	J. BROWN 05-04-99	A		2 OF 3		
sheet index		revision sheet								

THIS FILE WAS ORIGINALLY CREATED IN THE PRO ENGINEER ENVIRONMENT AND ANY FUTURE REVISIONS TO THIS FILE MUST BE MADE IN THE PRO ENGINEER ENVIRONMENT

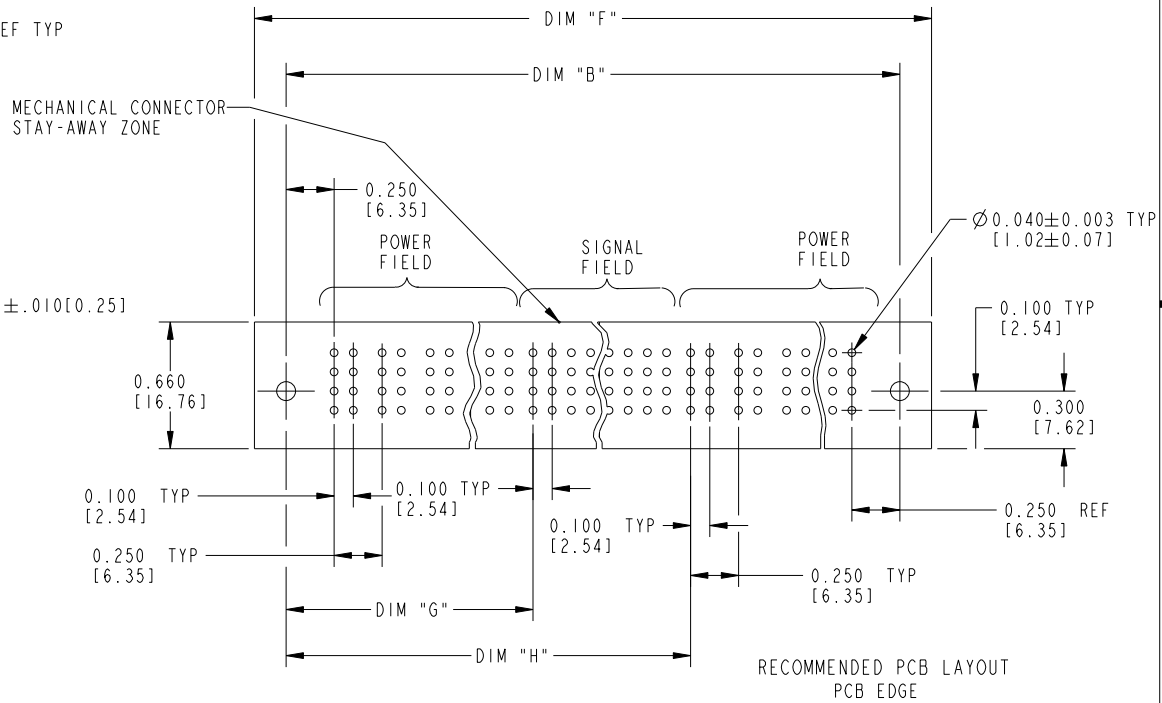
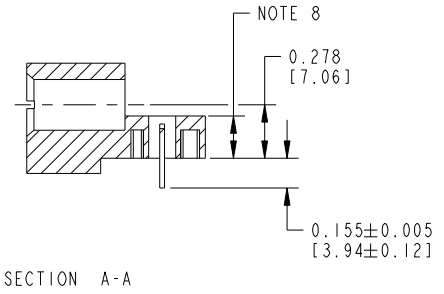
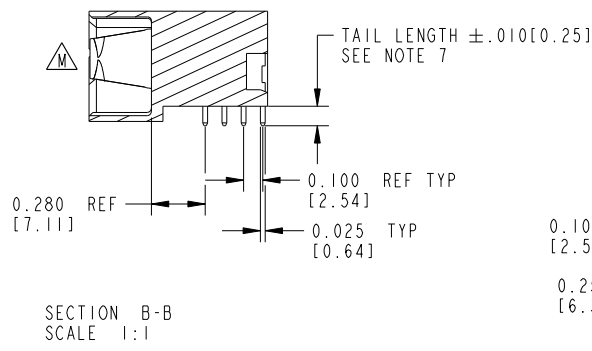
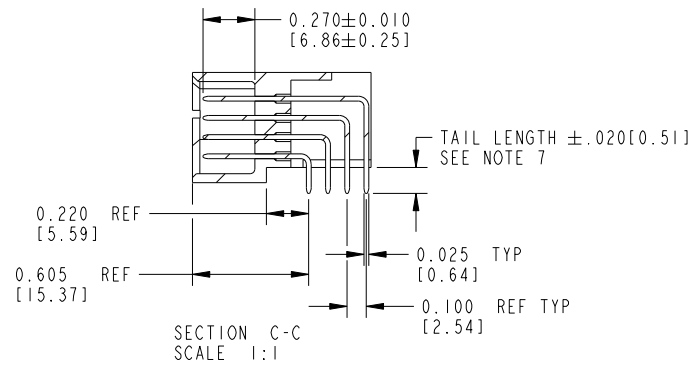
Tous droits strictement réservés. Reproduction ou communication a des tiers interdite sous quelque forme que ce soit sans autorisation écrite du propriétaire. Propriété de c FCI. Droits de reproduction FCI.

All rights strictly reserved. Reproduction or issue to third parties in any form whatever is not permitted without written authority from the proprietor. Property of FCI. Copyright FCI.



1 | 2 | 3 | 4

PRODUCT NUMBER
51720- ABBCCDDEF --
NOTE ①



mat'l code		tolerances unless otherwise specified		CUSTOMER COPY		www.fciconnect.com	
ltr	ecn no.	dr	date	linear	.XX±.01/.X±.3	projection	title
M				linear	.XXX±.005/.XX±.13		RIGHT ANGLE HEADER w/GUIDE PIN POWER / SIGNAL / POWER
				angles	.XXX±.0020/.XXX±.051		
				angles	0°±2°	INCH / MM	product family
				dr	C. BAROT 05-04-99	scale	PwrBlade
				engr	RYAN YUAN 11/08/06	1:1	code
				chr	J. BROWN 05-04-99	A	213
				appd	J. BROWN 05-04-99	size	SHEET
						dwg no	3 OF 3
sheet index	revision sheet					51720	

form no. 7530-001-103

1 | 2

PDM: Rev:M

STATUS: Released

Printed: Oct 17, 2008

A

B

cage code 28516

4